



Using Flexcel with Lazarus

Documentation: May, 2010
Copyright © 2010 by tmssoftware.com bvba
Web: <http://www.tmssoftware.com>
Email : info@tmssoftware.com

Table of contents

Introduction.....	3
About Flexcel and Lazarus	4

Introduction

FlexCel can be used with Lazarus: <http://www.lazarus.freepascal.org>

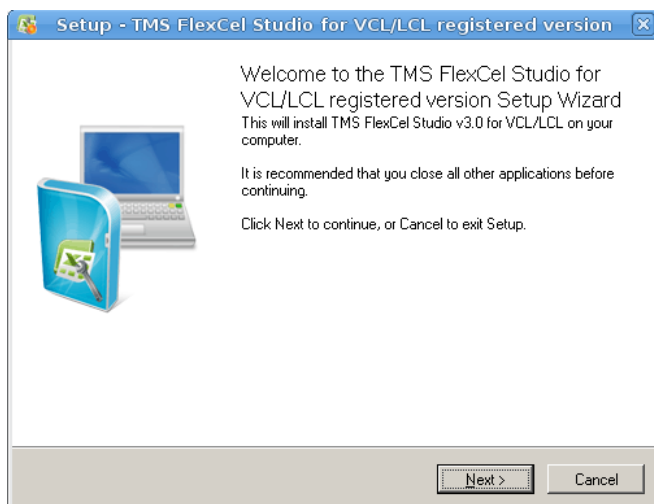
This allows you to create Excel files in a Linux Server, or in a Mac Pc.

About Flexcel and Lazarus

Most of the time, everything is transparent and using FlexCel with Lazarus should be no different than using it with Delphi. But there are things to take in account when using Lazarus and that is what we will detail here:

1. Get the latest Lazarus Snapshot. At least at the time of this writing, Lazarus is evolving very fast, and “Stable” versions tend to lag behind. FlexCel was tested with 0.9.25 so you need that at least, but try to get the latest version you can.
2. You need to install FlexCel manually in Lazarus, there is no automatic setup.

To install in Linux you might run the installer in Windows and then copy the files, or you might run “Setup.exe” under wine. (With the command “wine Setup.exe”):



Just uncheck all checkboxes where it offers to register help or modify the path, since they don't make sense in Linux.

3. Once you got the sources, first open and compile FlexCel.lpk, and then, if you want design-time support, compile and install FlexCel_DESIGN.lpk. Note that if you don't care about FlexCel appearing in the Component Palette, you don't need to install or compile FlexCel_Design.lpk. A Component Palette with FlexCel installed should look like this:



4. Demos at the time of this writing have not been tested in Lazarus and probably won't work without some tweaking.
5. If you are getting an error message “Import library not found for libz” when trying to install FlexCel in Windows, make sure you have a zlib1.dll file in your search path.
6. FlexCelPreview is not tested or supported in Lazarus.