

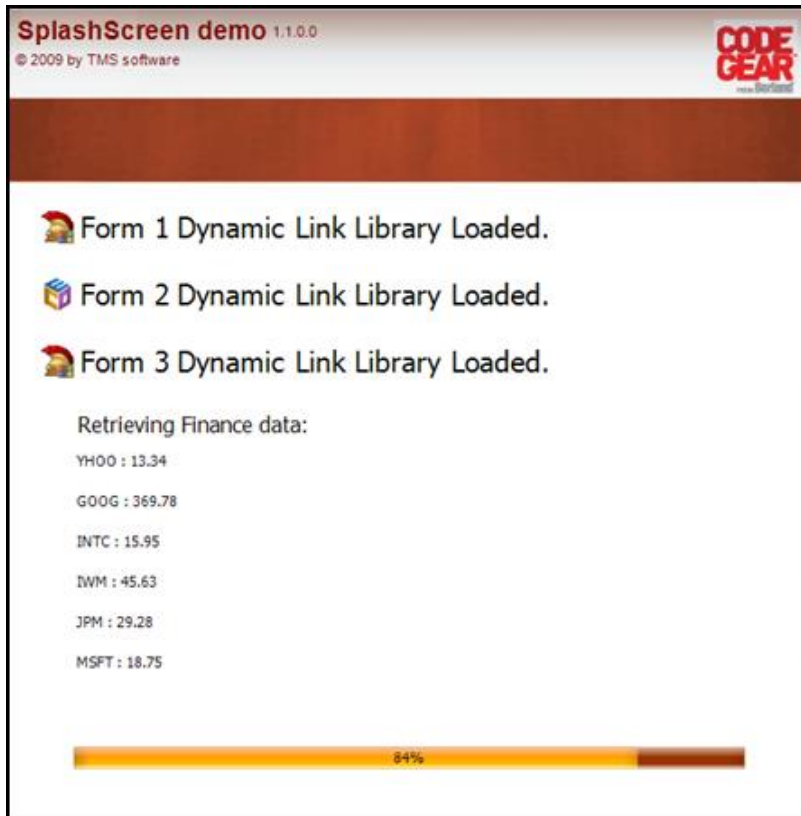
TMS Advanced Smooth SplashScreen DEVELOPERS GUIDE

April 2009
Copyright © 2009 by tmssoftware.com bvba
Web: <http://www.tmssoftware.com>
Email: info@tmssoftware.com

Index

TAdvSmoothSplashScreen.....	3
TAdvSmoothSplashScreen description.....	3
TAdvSmoothSplashScreen features	3
TAdvSmoothSplashScreen use	3

TAdvSmoothSplashScreen



TAdvSmoothSplashScreen description

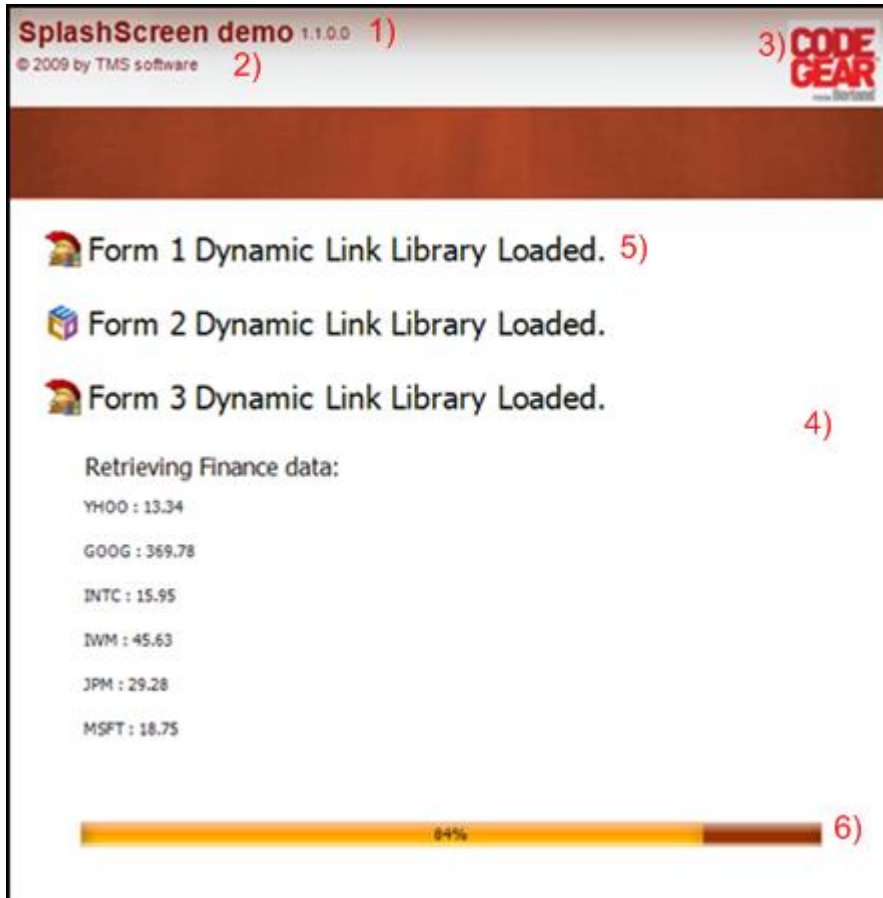
TAdvSmoothSplashScreen is designed to easily create rich splash screens to display information while loading large files.

TAdvSmoothSplashScreen features

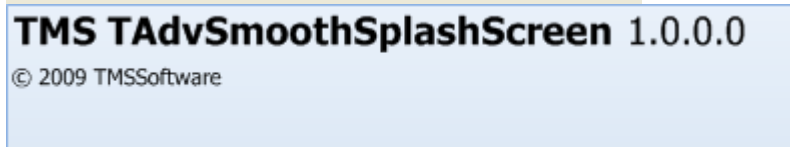
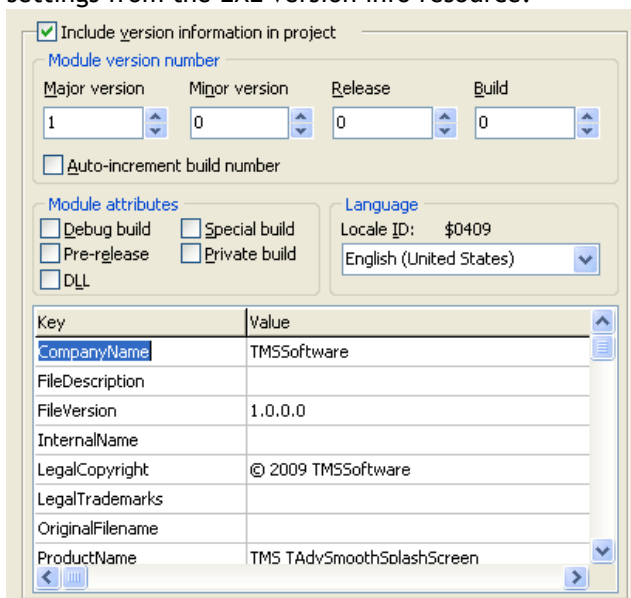
- All elements feature sophisticated gradient, texture, hatch fills with foreground and backgroundpicture support
- Progress bar to indicate progress during application start
- Fade in/out animation when splash screen appears
- Basic program information to automatically obtain program name and version from the executable version resource
- Top Layer items with opacity control to have full flexibility for designing the splash screen contents
- HTML formatted text support
- Background Texture support

TAdvSmoothSplashScreen use

Below is an overview of the TAdvSmoothSplashScreen major elements. These elements are important to customize the look and feel of the splashscreen:



1 & 2) **Basic Program Information:** The Splash screen allows you to set the program name version number and copyright. With the property AutoLoad the splash automatically loads the project settings from the EXE version info resource.



3, 4) The background fill of the splashscreen can contain texture, gradients opacities, etc...

`AdvSplashScreen1.Fill.Picture.LoadFromFile ('RAD2007.bmp');`

5) ListItems to display information about which item is loading. Supports HTML in combination with the ImageList and PictureContainer to specify images via HTML tag in items.

6) A ProgressBar to display the progress while the application is loading the different elements.

Below is a sample on how to simulate a splash screen. The layout will be based on the Office 2007 Luna style. With the basic program information you can automatically display the program name and version that is embedded inside the EXE version info resource.

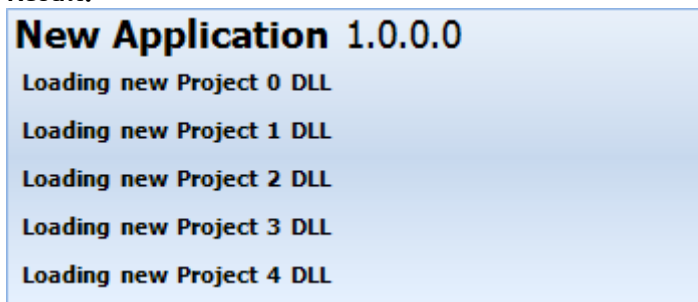
Code:

```
var
  I: integer;
begin
  AdvSmoothSplashScreen1.SetComponentStyle (tsOffice2007Luna);
  AdvSmoothSplashScreen1.Height := 150;
  AdvSmoothSplashScreen1.Width := 350;
  AdvSmoothSplashScreen1.CloseOnTimeout := true;
  AdvSmoothSplashScreen1.ListItemsSettings.Rect.Top := 30;
  AdvSmoothSplashScreen1.ListItemsSettings.Rect.Left := 5;
  AdvSmoothSplashScreen1.BasicProgramInfo.AutoLoad := true;

  AdvSmoothSplashScreen1.Show;

  I := 0;
  while I <= 4 do
  begin
    AdvSmoothSplashScreen1.ListItems.Add.HTMLText := '<b>Loading new
Project '+inttostr(I)+' DLL</b>';
    AdvSmoothSplashScreen1.Refresh;
    Sleep(1000);
    Inc(I);
  end;
```

Result:




The splash screen also supports background textures and toplayer items to enhance the look and feel. Below are 2 sample images of splash screens build with toplayer items and background textures.

Each element can be positioned with an x and y coordinate absolute or relative depending on the type of element. When changing properties at runtime it is best to call `beginupdate` and `endupdate` that will update the splash screen after the changes have been set.



Wednesday, April 15, 2009
Today: Sunny 30°C

Forecast:

04.16.09 Partly Cloudy 	04.17.09 Rainy 
04.18.09 Snowy 	04.19.09 Sunny 