



TMS Advanced Mobile HotSpotImage DEVELOPERS GUIDE

Table of contents

TMS Advanced Mobile HotSpotImage availability	3
TMS Advanced Mobile HotSpotImage use	3
TMS Advanced Mobile HotSpotImage organisation	4
TMS Advanced Mobile HotSpotImage setup and methods.....	4
TMS Advanced Mobile HotSpotImage getting started with the HotSpot editor	8
TMS Advanced Mobile HotSpotImage programmatic access to HotSpots.....	11

TMS Advanced Mobile HotSpotImage availability

The TMS Advanced Mobile HotSpotImage Component is available for Visual Studio 2005, 2008

Supported OS Versions:

- Windows Mobile 5, Windows Mobile 6

Supported .NET Framework Versions

- Compact Framework 2.0, 3.0, 3.5



TMS Advanced Mobile HotSpotImage use

The TMS Advanced Mobile HotSpotImage component is designed to allow indication, selection, handling of clicks on arbitrary shapes (hotspots) within an image. Such an arbitrary shape or hotspot can be displayed in a different color or with a different superimposed image for mouse hover, click and blink state. A HotSpotEditor is available with which hotspots can be graphically edited both at runtime and designtime.

TMS Advanced Mobile HotSpotImage organisation

The HotSpotImage consists of an image and a collection of hotspots. The hotspot collection holds the information for each hotspot. A hotspot has a shape: rectangle, ellips or polygon. In addition it has settings for image to show in clicked & hovered state and color to use in clicked, selected, down & hovered state. Each hotspot can also have a hint. Using the HotSpotImage is as simple as adding definitions for the hotspot in the HotSpots collection. The HotSpotImage has different events that are triggered upon mouse interaction with the HotSpots.

TMS Advanced Mobile HotSpotImage setup and methods

Properties

The specific properties available in HotSpotImage are:

HotSpotImage.AutoSize: Boolean

When true, the size of the HotSpotImage component automatically adapts to the of the picture used for the HotSpotImage.

HotSpotImage.BlinkInterval: Integer

This sets the frequency for a blinking hotspot

HotSpotImage.HotSpots

This is the collection of the definitions of the hotspots

HotSpotImage.Images: TImageList

This is the imagelist that holds images that can be displayed over hotspots on click or hover.

HotSpotImage.Picture

This sets the HotSpotImage background picture.

HotSpotImage.SelectionMode

This selects the SelectionMode. SelectionMode can be:

- smSingleSelect: a single hotspot can be selected at a time.
- smMultiSelect: multiple hotspots can be selected by simple mouse clicks

HotSpotImage.Stretch

When true, the HotSpotImage background picture stretches to the size of the control

Events

HotSpotImage.HotSpotClick: triggered on a single click on a hotspot

HotSpotImage.HotSpotDbClick: triggered on a double click on a hotspot

HotSpotImage.HotSpotEnter: triggered when the mouse enters a hotspot

HotSpotImage.HotSpotExit: triggered when the mouse leaves a hotspot

HotSpotImage.HotSpotRightClick: triggered on a right click on a hotspot

HotSpots collection

This collection consists of objects of the type HotSpotItem. The HotSpotItem has following properties:

HotSpotItem.ShapeType: TSpotShapeType

This sets the type of the hotspot shape:

- stRectangle: hotspot shape is rectangular
- stEllips: hotspot shape is ellips
- stPolygon: hotspot shape is a polygon

HotSpotItem.Name

Sets a name for a hotspot

HotSpotItem.ID

Sets an ID for a hotspot

HotSpotItem.X

Sets the X coordinate of the hotspot. For an ellips or rectangle, this is the left coordinate

HotSpotItem.Y

Sets the Y coordinate of the hotspot. For an ellips or rectangle, this is the top coordinate

HotSpotItem.Width

Sets the width of the hotspot for an ellips or rectangle

HotSpotItem.Height

Sets the height of the hotspot for an ellips or rectangle

HotSpotItem.Clipped

When true, the hotspot clicked, selected, hover, blink image is displayed clipped within the shape of the hotspot

HotSpotItem.ClickImage

Sets the image to display over the hotspot when clicked

HotSpotItem.SelectedImage

Sets the image to display over the hotspot when the hotspot is in selected state

HotSpotItem.BlinkImage

Sets the image to display over the hotspot when the hotspot is in blinking state

HotSpotItem.ClickImageIndex

Sets the image from the imagelist to display over the hotspot when clicked

HotSpotItem.SelectedImageIndex

Sets the image from the imagelist to display over the hotspot when selected

HotSpotItem.BlinkImageIndex

Sets the image from the imagelist to display over the hotspot when blinking

HotSpotItem.Angle

Sets the angle of the ellips or rectangle shape

HotSpotItem.ClickColor

Sets the background color of the hotspot when clicked. The color is only used when no click image is assigned.

HotSpotItem.SelectedColor

Sets the background color of the hotspot when selected. The color is only used when no selected image is assigned.

HotSpotItem.BlinkColor

Sets the background color of the hotspot when blinking. The color is only used when no hover image is assigned.

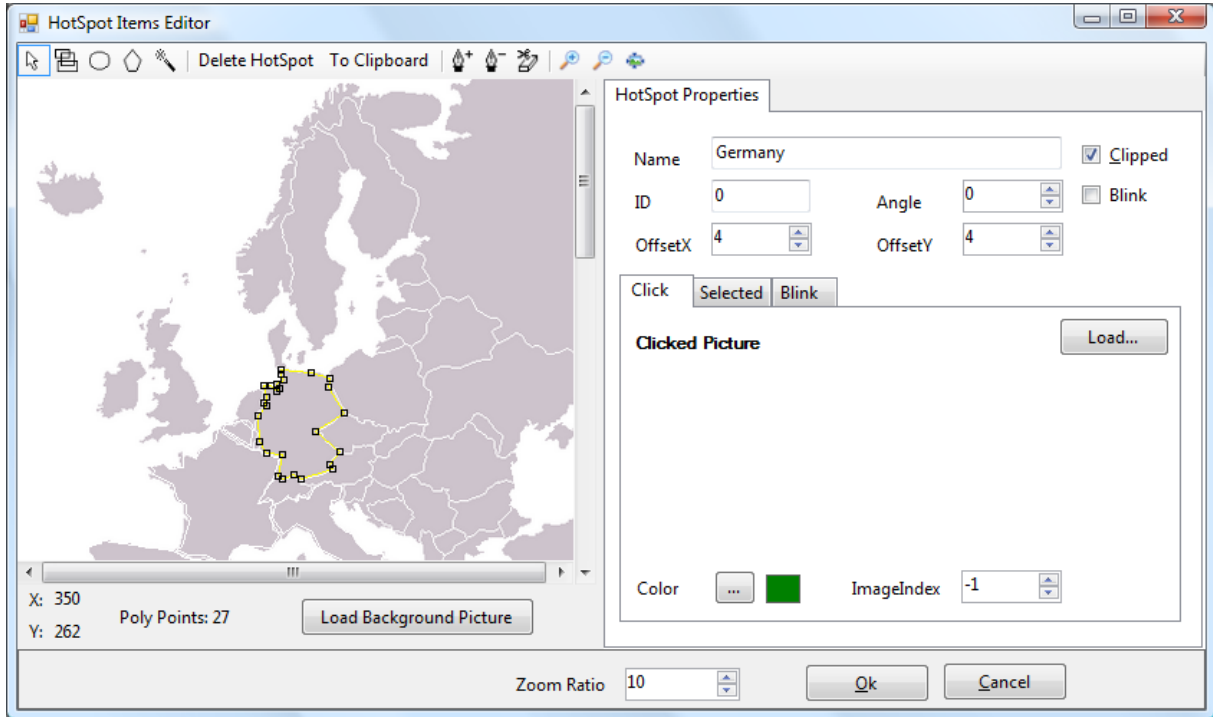
HotSpotItem.Blink

When true, the hotspot is in blinking state

HotSpotItem.Selected

When true, the hotspot is in selected state

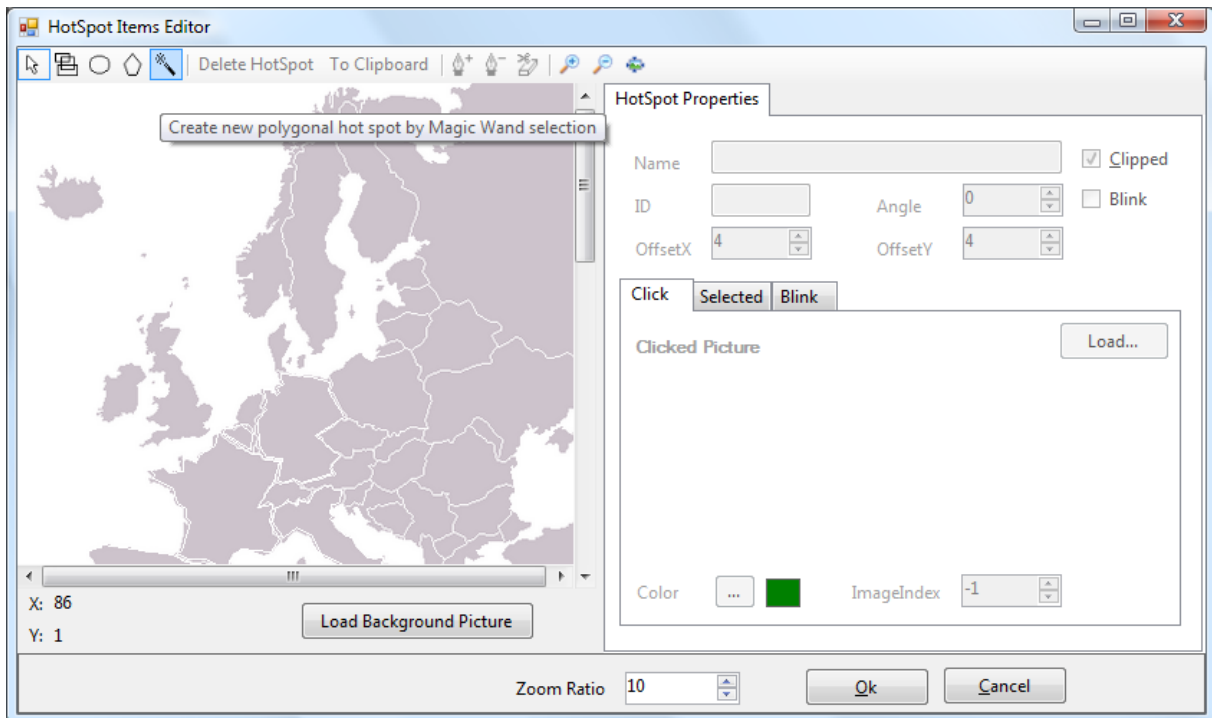
While the HotSpots collection can be programmatically accessed, there is also a HotSpot editor provided. This HotSpot editor is invoked when clicking the HotSpots property in the Properties Window:



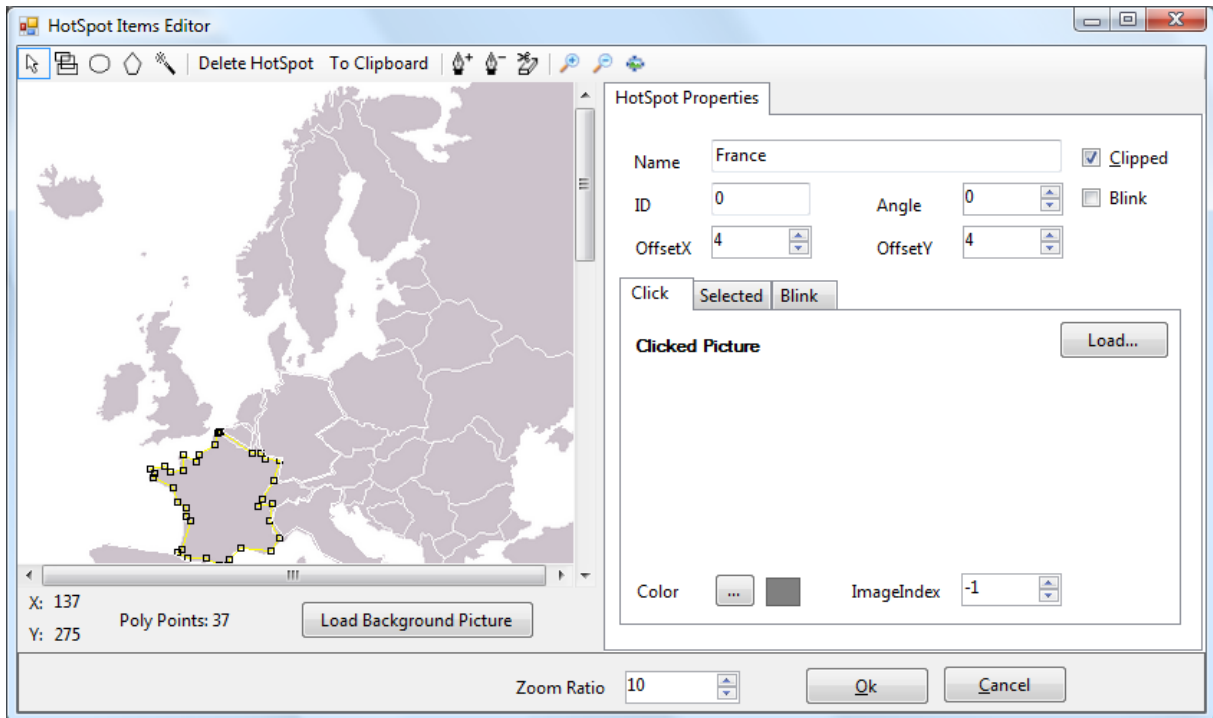
TMS Advanced Mobile HotSpotImage getting started with the HotSpot editor

Drop a HotSpotImage on the form and load a background picture via the Picture property. Start the HotSpots editor by clicking the HotSpots property in the Properties Window.

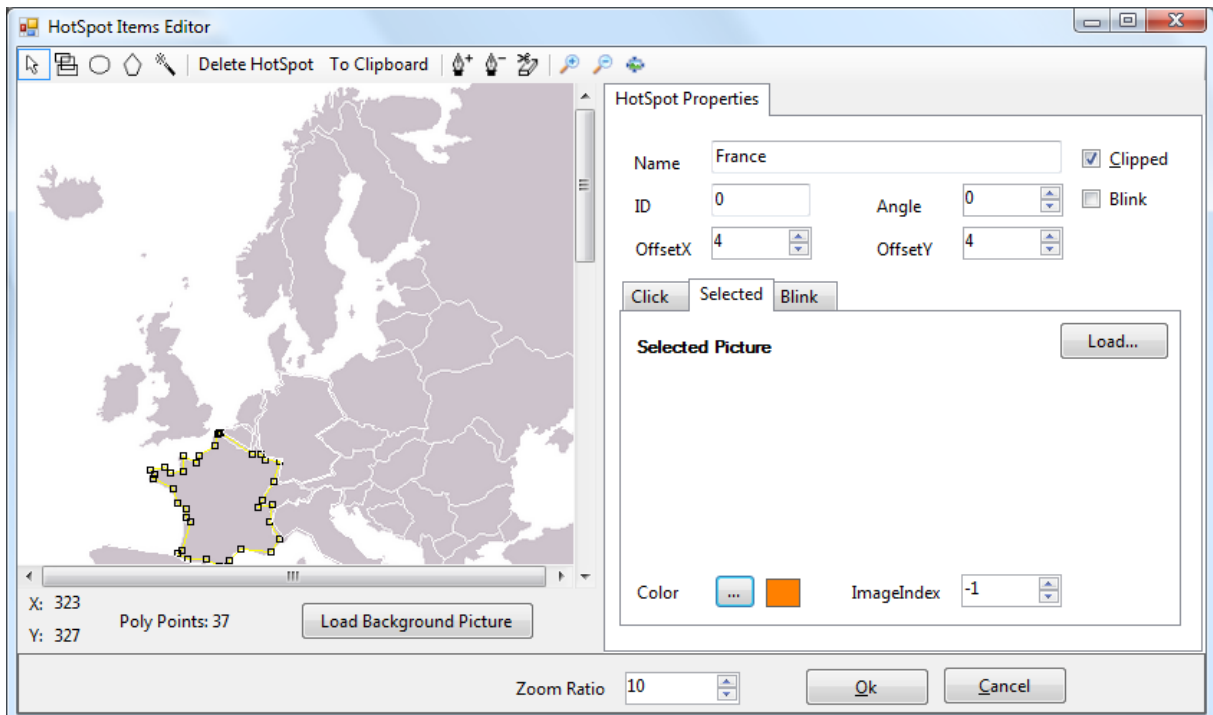
Select the magic wand tool to automatically select an area:



After clicking inside the area of France and going to selection mode again by clicking the first arrow button on the toolbar, this becomes:



On the right pane, the properties for the hotspot can be edited. The name, ID, Hint, Angle and state of the hotspot can be set. In the different tabs, either image, color or imagelist image can be set for the different states of the hotspot. For example, moving to the Selected tab and setting the Selected color to orange results in:



After clicking the hotspot at runtime to select it, this appears as:



TMS Advanced Mobile HotSpotImage programmatic access to hotspots

It is equally possible to programmatically add & delete hotspots.

This code snippet adds an ellips shaped hotspot to the HotSpotImage:

C#

```
TMS.Mobile.HotSpotImage.AdvHotSpotImage.HotSpotItem hsi = new
AdvHotSpotImage.HotSpotItem();

hsi.X = 50;
hsi.Y = 50;
hsi.Width = 75;
hsi.Height = 75;
hsi.ShapeType = AdvHotSpotImage.SpotShapeType.stEllipse;
hsi.Clipped = true;
hsi.SelectedColor = Color.Lime;
hsi.Name = "Circle close to Iceland";
hsi.ID = 1;
advHotSpotImage1.HotSpots.Add(hsi);
```

VB

```
Dim hsi As TMS.Mobile.HotSpotImage.AdvHotSpotImage.HotSpotItem = New
AdvHotSpotImage.HotSpotItem()

hsi.X = 50
hsi.Y = 50
hsi.Width = 75
hsi.Height = 75
hsi.ShapeType = AdvHotSpotImage.SpotShapeType.stEllipse
hsi.Clipped = True
hsi.SelectedColor = Color.Lime
hsi.Name = "Circle close to Iceland"
hsi.ID = 1
advHotSpotImage1.HotSpots.Add(hsi)
```



The result after clicking with the following OnHotSpotClick event handler:

C#

```
private void advHotSpotImage1_HotSpotClick(object Sender,
HotSpotEventArgs e)
{
    MessageBox.Show("Hotspot clicked: " + e.Item.ID + ':' + e.Item.Name);
}
```

VB

```
Private Sub advHotSpotImage1_HotSpotClick(ByVal Sender As Object, ByVal e
As HotSpotEventArgs)
    MsgBox("Hotspot clicked: " & e.Item.ID + ":" & e.Item.Name)
End Sub
```

This results in:

